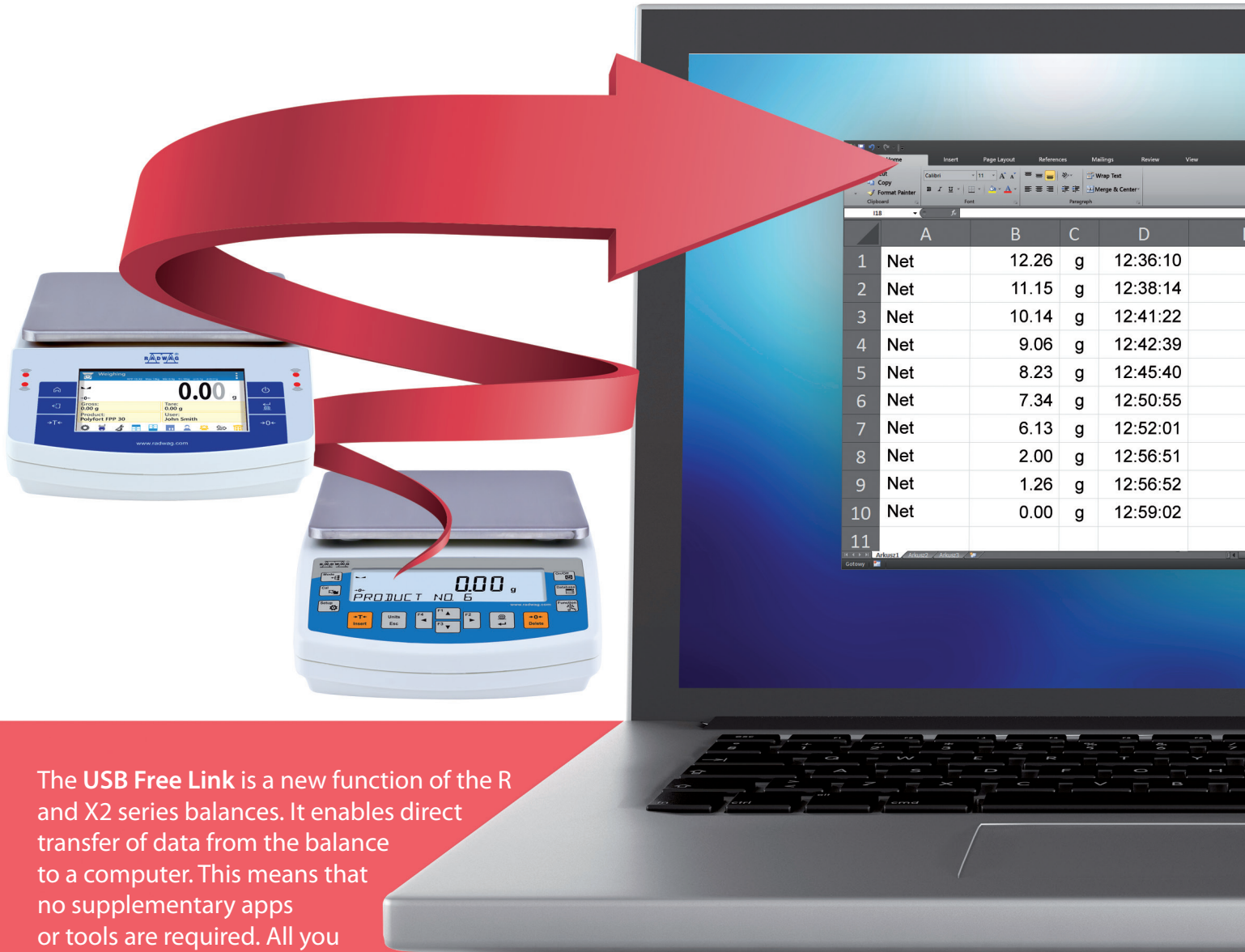


USB Free Link

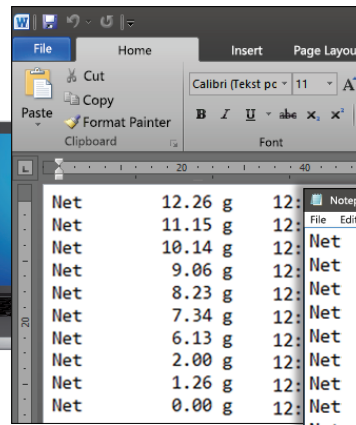
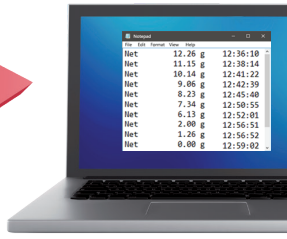
DIRECT BALANCE – PC COMMUNICATION
NO ADDITIONAL PROGRAMS REQUIRED



The **USB Free Link** is a new function of the R and X2 series balances. It enables direct transfer of data from the balance to a computer. This means that no supplementary apps or tools are required. All you need to do is simply to connect your balance and the computer using USB cable.

With the **USB Free Link** the data is transferred automatically to a currently operated computer app (e.g. Word, Excel, Notepad, etc.) upon pressing any balance key (e.g. Enter - printout, F1 - header, F3 - footer). The transferred text format remains unchanged.

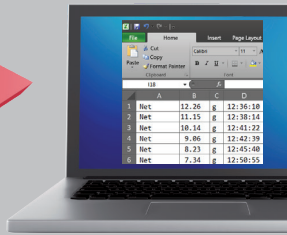
Transfer of data to a currently operated application



Automatically carried out transfer of data to Wordpad, MS Word and other text editors.

Net	Unit	Time
12.26	g	12:36:10
11.15	g	12:38:14
10.14	g	12:41:22
9.06	g	12:42:39
8.23	g	12:45:40
7.34	g	12:50:55
6.13	g	12:52:01
2.00	g	12:56:51
1.26	g	12:56:52
0.00	g	12:59:02

Transfer of data to a spreadsheet program



	A	B	C	D
1	Net	12.26	g	12:36:10
2	Net	11.15	g	12:38:14
3	Net	10.14	g	12:41:22
4	Net	9.06	g	12:42:39
5	Net	8.23	g	12:45:40
6	Net	7.34	g	12:50:55
7	Net	6.13	g	12:52:01
8	Net	2.00	g	12:56:51
9	Net	1.26	g	12:56:52
10	Net	0.00	g	12:59:02

Automatically carried out transfer of data to Excel, Open Office Calc and other spreadsheet programs.

	A	B	C	D
1	Net	12.26	g	12:36:10
2	Net	11.15	g	12:38:14
3	Net	10.14	g	12:41:22
4	Net	9.06	g	12:42:39
5	Net	8.23	g	12:45:40
6	Net	7.34	g	12:50:55
7	Net	6.13	g	12:52:01
8	Net	2.00	g	12:56:51
9	Net	1.26	g	12:56:52
10	Net	0.00	g	12:59:02

Transfer of data to CSV and TXT files



Import of data to a freely selected spreadsheet program.

