



Terminals and Scales Operated in Industry

HIGH-TECH WEIGHING TECHNOLOGY

WEIGHING TERMINALS

Advanced Solutions for Industry

With use of advanced RADWAG terminals you can design multifunctional load cell scales. The terminals are intended for cooperation with high resolution platforms and weighing modules. Some selected terminals serve as a base of multiplatform weighing systems.

When it comes to terminals range, RADWAG offers numerous designs meeting various use-related requirements. Particular models differ in LCD size, IP rating, housing type, software and most of all their functionality. The most hi-tech models combine features typical for balance and for advanced industrial computer.

Terminal's software provides numerous applications enabling processes such as weighing, dosing, labelling, formulations,

parts counting, weight control, etc. Equipped with numerous interfaces the terminal can be integrated into automatic systems of production line.

Some models can be compatible with user-owned weighing applications. Cooperation between applications of yours and platforms or weighing modules is possible due to a set of programming components.



PUE C32 Terminal

OIML accuracy class: III
Max quantity of verification units: 6000 e
Display: 5" graphic colour
Housing: ABS plastic
Power supply: battery, mains power
Supported platforms quantity: 1
IP rating: IP 43
Communication interfaces: USB (type A), USB (type B), RS232 (x2) Ethernet (x1), In (x4), OUT (x4) Wireless Connection

4 LOAD CELL SCALES

Precise Measurement in Industry



WPT/4 C Platform Scale

Maximum capacity [Max.]: 150 kg – 6000 kg
Readability [d]: 0.05 kg – 2 kg
Platform dimensions: 800×800 mm – 2000×2000 mm
Platform design: powder-coated steel
Indicator: PUE C31
Display: backlit LCD
Keyboard: 5 function keys
Power supply: battery (up to 35 h) and mains power
Communication interfaces: RS232
IP rating: IP 65 – platform, IP 43 – indicator



WPT/4 H Platform Scale

Maximum capacity [Max.]: 300 kg – 6000 kg
Readability [d]: 0.1 kg – 2 kg
Platform dimensions: 800×800 mm – 1500×2000 mm
Platform design: stainless steel
Indicator: PUE C31H
Display: backlit LCD
Keyboard: 5 function keys
Power supply: battery (up to 45 h) and mains power
Communication interfaces: RS232
IP rating: IP 68 – platform, IP 68/69 – indicator

Mass measurement carried out using 4 load cell solution guarantees accuracy and precision regardless of load location on the weighing pan. RADWAG-manufactured 4 load cell scales stand for precise and fast mass measurement performed even under severe industrial conditions.

4 load cell range covers numerous design solutions. Particular models differ in used material (stainless steel or powder-coated steel) and offered design (floor version, pit version, opening weighing pan version, ramp scales, pallet scales).



PUE 7.1 Terminal

OIML accuracy class: III

Max quantity of verification units: 6000 e

Display: 5.7", touchscreen

Housing: ABS plastic

Operating system: Windows CE 7

Processor: Dual-Core 1GHz

Memory: 256 MB RAM + 8 GB micro SD

Supported platforms quantity: 2

IP rating: IP 43

Communication interfaces: USB (x2), RS232 (x2), Wireless Connection, In (x4), OUT (x4)



PUE HY 10 Terminal

OIML accuracy class: II or III

Max quantity of verification units: 6000 e

Display: 10.1", touchscreen

Housing: stainless steel

Operating system: Windows 7 Embedded Compact

Processor: Dual-Core 1GHz

Memory: 256 MB RAM + 8 GB micro SD

Supported platforms quantity: 1 (6 - option)

IP rating: IP 68/69

Communication interfaces: USB (x2), RS232 (x2), Ethernet (x1), In (x4), OUT (x4), optionally: Profibus, additional IN (x12), OUT (x12), RS232, RS 485, CAN Open, Wireless Connection



PUE 5 Terminal

OIML accuracy class: III

Max quantity of verification units: 6000 e

Display: 15.6" or 19", touchscreen

Housing: stainless steel

Operating system: Windows 7 Embedded

Processor: Quad-Core 2GHz

Memory: 4 GB RAM + 60 GB SSD

Supported platforms quantity: 1 (4 - option)

IP rating: IP 65 (IP 68 - option)

Communication interfaces: USB (x4), RS 232 (x2), RS 485 (x1), Ethernet (x2), optionally: IN (x4), OUT (x4)



WPT/4N H Ramp Scale

Maximum capacity [Max.]: 150 kg – 1500 kg

Readability [d]: 0.05 kg – 0.5 kg

Platform dimensions: 840x860 mm – 1500x1500 mm

Platform design: stainless steel

Indicator: PUE C31H

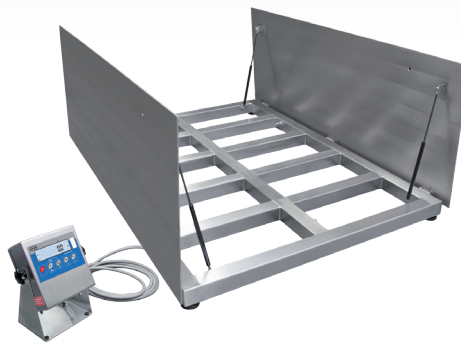
Display: backlit LCD

Keyboard: 5 function keys

Power supply: battery (up to 45 h) and mains power

Communication interfaces: RS232

IP rating: IP 68 – platform, IP 68/69 – indicator



WPT/4 H/Z Platform Scale – Pit Version

Maximum capacity [Max.]: 300 kg – 6000 kg

Readability [d]: 0.1 kg – 2 kg

Platform dimensions: 800x800 mm – 1500x2000 mm

Platform design: stainless steel

Indicator: PUE C31H

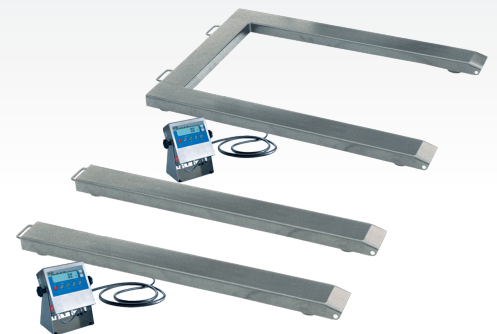
Display: backlit LCD

Keyboard: 5 function keys

Power supply: battery (up to 45 h) and mains power

Communication interfaces: RS232

IP rating: IP 68 – platform, IP 68/69 – indicator



WPT/4P H Pallet Scale

Maximum capacity [Max.]: 600 kg – 3000 kg

Readability [d]: 0.2 kg – 1 kg

Platform dimensions: 860x1200 mm

WPT/4P2 H Beam Scale

Maximum capacity [Max.]: 600 kg – 6000 kg

Readability [d]: 0.2 kg – 2 kg

Beams length: 1200 mm – 2500 mm

Platform/beams design: stainless steel

Indicator: PUE C31H

Display: backlit LCD

Keyboard: 5 function keys

Power supply: battery (up to 45 h) and mains power

Communication interfaces: RS232

IP rating: IP 68 – platform, IP 68/69 – indicator

Ease of weighing platform loading!

Opening weighing pan (ease of maintenance)!
Option of embedding the platform in a ground!

Weighing of pallets (pallet scale) and loads of various dimensions (beam scale)!

WATERPROOF SCALES

Reliability Under Severe Conditions



WPT/H Waterproof Scale

Maximum capacity [Max.]: 3 kg – 300 kg
Readability [d]: 1 g – 100 g
Platform Design: 200×150 mm – 800×800 mm
Platform design: AISI 304 stainless steel
Indicator: PUE C31H
Display: backlit LCD
Keyboard: 5 function keys
Power supply: battery (up to 45 h) and mains power
Communication interfaces: RS232
IP rating: IP 67 – platform, IP 68/69 – indicator

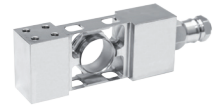
💡 Bellow design applied on WPT/H scales aims to protect load cell against ambient conditions influence.



WPT/HR Waterproof Scale

Maximum capacity [Max.]: 3 kg – 150 kg
Readability [d]: 1 g – 50 g
Platform Design: 250×300 mm – 600×600 mm
Platform design: AISI 316 stainless steel
Indicator: PUE C31H
Display: backlit LCD
Keyboard: 5 function keys
Power supply: battery (up to 45 h) and mains power
Communication interfaces: RS232
IP rating: IP 68 – platform, IP 68/69 – indicator

💡 Applied in WPT/HR scales load cell with IP 68/69K guarantees precise measurement under challenging industrial conditions.



Operation in humid environment and in case of direct contact with water requires use of special weighing instruments. Waterproof scales provide precise mass measurement and reliable, failure free operation under severe industrial conditions.

Waterproof platform scales offer two various design solutions which differ in IP rating (IP 67 or IP 68), used material (AISI 304 or AISI 316 stainless steel) and applied load cell protection technology.

